



PYN PRECISION GROUP

Introduction



- PYN is a **precision component machining and manufacturing company** based in India
- PYN has **over 30 years experience** in **Automotive, Aerospace, Off-highway and Engineering industries**
- PYN has **long-term satisfied customers** such as Maruti Suzuki, Tata Motors, ISRO, HAL, Carraro, American Axle, Daimler India Commercial Vehicles etc.
- PYN has now reached **the Moon** as our **components are aboard India's first mission to the moon – Chandrayaan**. Our components were also present in the launch vehicle – **PSLV**.

Background



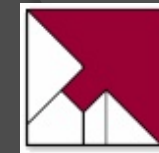
- Parent company - **Northern Tools and Gauges Pvt. Ltd. (NTG)** is a family-owned and operated company established in **1975**
- **first CNC machining job shop in North India - 1983**
- **Tier-1 supplier** to the Indian **AUTOMOTIVE, AEROSPACE** and **ENGINEERING** industries for over twenty years
- supplying **over 300,000 machined parts per month** to **AUTOMOTIVE** customers
- **single source** for numerous critical parts for the Indian **AEROSPACE** and **AUTOMOTIVE** industries
- reputed manufacturer of **CUTTING TOOLS** such as gear cutting hobs and hacksaw blade milling cutters

Overview



1. **Multi-location** manufacturing facilities in Faridabad, Pune, and Bengaluru
2. Consistently **ranked No.1 in quality by Maruti Suzuki Ltd.**
3. ISO/TS 16949:2009 certified by TUV-SUD
4. Strength in **rapid design and development** due to extensive tool room experience and facilities
5. Providing a **one-stop and end-to-end solution for our customers**

Location



Customers (indicative)



AUTOMOTIVE:

- Maruti Suzuki Ltd.
- Suzuki Powertrains Ltd.
(Diesel Engines)
- Subros Ltd.
- Tata Motors Ltd.
- Eicher Ltd.
- Carraro India Ltd.
- Caparo India
- General Motors

- **American Axle**

- **Daimler India Commercial Vehicles**

AEROSPACE:

- Indian Space Research Organization
- Hindustan Aeronautics Ltd.
- Bharat Electronics Ltd.
- Vikram Sarabhai Space Center
- Space Applications Center

Products (indicative)



- **AUTOMOTIVE PRODUCTS**
- **Engine parts:**
 - Intake manifolds, Cylinder head cover , **Crankshaft pulley** , Engine mounting bracket
 - Generator mounting bracket
 - **Bearing inserts for bed plate**
- **Car A/C parts:**
 - **Compressor Clutch Rotor**, Compressor housing cover
 - Idler pulley
 - **Tube connectors**
 - **Compressor mounting bracket**
- **Transmission and Axle parts:**
 - **Differential housing**, **gear box housing**, synchronizer parts
 - **Planetary carrier**, **Epicyclic carrier**
 - **Wheel hub**
 - Clutch Arm Release
 - Gear shift case

Products (indicative)



- ◉ **AEROSPACE PRODUCTS**

- ◉ **RADAR PARTS**
 - Microwave components, Wave-guides
 - Motion control parts
- ◉ **SATELLITE/PAYLOAD PARTS**
 - Structural parts, space communication parts
 - Navigation parts
 - Space Telescope parts, Space-based remote sensing camera parts
- ◉ **SATELLITE LAUNCHING VEHICLE PARTS**
 - Structural parts
 - Engine parts
 - Propulsion parts
 - Avionics components

People



- **Kishore Gupta**

- B.E.(Hons) - BITS, Pilani
- Over 40 years experience in manufacturing business - autocomponents, aerospace and CNC machining

- **Aditya Pittie**

- B.S.Engg (Summa Cum Laude)- University of Michigan, USA
- GSMP - INSEAD, France
- Over 16 years top level business experience
- Pittie Enterprises Group - real estate, solar energy, high-tech agriculture
- The oldest and most respected business family in Pune - The Raja Bahadur Motilal Poona Mills Ltd, est. 1893

Quality



- major customers utilizing our services for more than twenty years
- High quality consistency
- consistently **ranked No.1 in quality by Maruti Suzuki Ltd.**
- Direct online supplier to Maruti Suzuki
- **Zero rejections at customer end**
- Daily Red Bin Analysis and QCM meetings.
- **Near-perfect repeatability of close tolerances**
- **Robust and well-established processes and systems** are well integrated within our work practices eg. Kaizen, Poka Yoke, value stream mapping, root cause analysis, 5 whys? etc.
- **ISO/TS 16949:2009 certified by TUV-SUD**

Quality Policy



We are committed to meeting and exceeding customer expectations of products and services through highest quality, on-time delivery and zero defects while maintaining the highest standards of fairness, integrity, transparency, trust, safety and morale to emerge as a leading precision component manufacturer.

OBJECTIVES:

1. Zero defects
2. On-time delivery
3. Improvement in customer satisfaction level

Strengths



1. **Rapid localization to reliable delivery**
2. **Highest quality standards** with proven and long established track record of supplying critical line items to Auto majors in India as well as to Aerospace industry with **Zero PPM**.
3. **Reduced development time and cost**. We have a separate division for this.
4. **Robust backward integration of our supply-chain** with a dedicated cluster of high-quality vendors for castings, forgings, extrusions, painting, plating, heat treatment etc.
5. **Zero debt company**.

Strengths



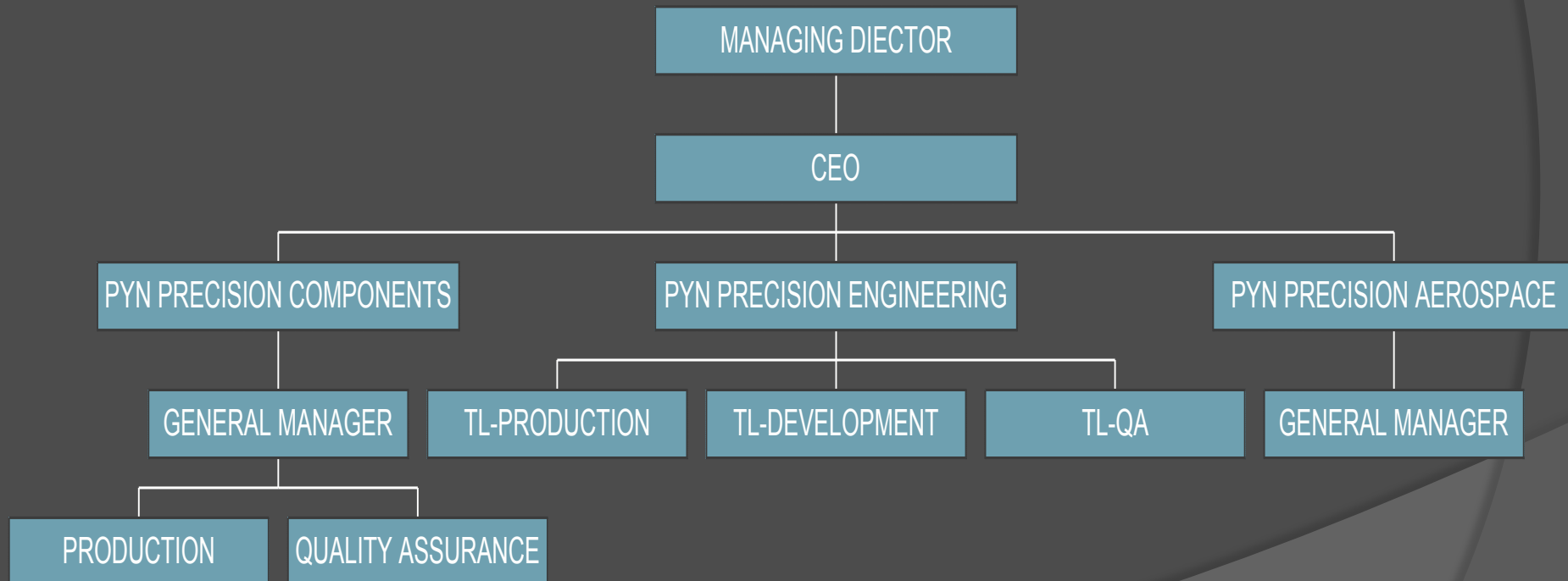
6. Internal machining standards are maintained at **half tolerance** of all specifications thereby leading to high Cp/CpK
7. **Stringent inspection and QA standards** through CMM and accredited testing labs
8. Use of **latest technology**
9. Large, well equipped **tool room**
10. In-house pattern and die manufacturing for rapid development of castings and forgings
11. Experience in manufacture of special toolings, jigs & fixtures

Strengths



12. **Rapid development with reduced time and cost** - our full fledged in-house tool room and **30 years of tool room experience** enable us to rapidly develop new components, jigs, fixtures, gauges and tools
13. A workforce of **over 250 highly skilled, trained and motivated employees**
14. **Highly skilled development team** with expertise in Automotive and Aerospace machining
15. **Impeccable reputation and long term relationship** with all our stake holders

Organization Structure



Differentiators



- FIRST TIME RIGHT
- Rapid design and development
- End-to-end solution : from design to production
- Low cost country advantage
- Strong tool room and development capabilities
- Short lead time and reduced costs
- Multi-location
- Robust and mature systems and processes
- Customer centric/focussed
- Best quality, low cost, on-time
- Zero defects
- Flexibility/adaptability in volumes and batch sizes

Machining Capacity (indicative)



- 35 Vertical Machining Centers
- 3 Horizontal Machining Centre
- 28 CNC Turning Centers
- 8 CNC Flexible Manufacturing Systems
- 2 Vertical Turret Lathe (VTL) – 0.5 and 4.0 m
- 1 SIP Jig Boring machine (considered world's best)
- Over 100 conventional machines (lathes, milling machines, tapping machines, drill machines etc.)
- Fully equipped QC and inspection facilities (including 2 Mitutoyo and 1 Zeiss Numerex CMM)

Infrastructure



- **Factory at Faridabad, North India**
 - Principal unit with 3 plants
 - Primarily catering to automotive business
- **Factory at Sanaswadi, Pune, West India**
 - Primarily catering to commercial vehicles and off-highway business
- **Factory at Bengaluru, South India**
 - Primarily catering to aerospace business

Growth



- **Plans:**
 - Expansion of **Product lines**: eg. axles, transmission, powertrain
 - Backward integration - ferrous foundry
 - **Export** of products and assemblies
 - Expansion of **aerospace**, aircraft MRO and defence business
 - Technology-led growth through **foreign collaborations, JV's** etc.
 - Forward integration into **assemblies, systems** etc.
 - Acquisitions in India and abroad
 - **total solutions from design and engineering, prototyping, validation and supply.**